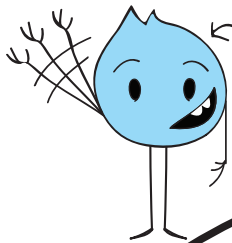


IDENTIFYING THE CONTINENTS AND LARGE BODIES OF WATER ON OUR GLOBE

Welcome, Explorer!

First thing's first: get acquainted with the globe. There are seven continents on the planet, and many bodies of water. You'll need to know where all of them are located.

DIRECTIONS: Color in the continents below. Label each continent. Cut them out and glue them in the correct place on the blank globe below.



**EDDIE
THE
EXPLORER**

